

Trigger Switch

Sub-miniature switch integrated



MTS triggers integrate momentary action switches in the smallest package that can be mounted in control grips and other portable units. A variety of configurations such as position number, flap guard and colors are available to satisfy different applications.

Key features

- ▶ Aerospace grade
- ▶ Excellent force feedback
- ▶ Small size for easy integration
- ▶ Positive detent action
- ▶ Up to 5A switching capability
- ▶ Low level switching capability
- ▶ NO/NC double break outputs
- ▶ Available with flap guard
- ▶ Composite materials
- ▶ RoHS compliant

Applications

- ▶ Control grip

Standards

- ▶ MIL STD 810D /461
- ▶ MIL STD 1250
- ▶ GAM EG13
- ▶ MIL-S-9487 ?

	Trigger switch	
	single-position	two-position
Mechanical characteristics		
Operating force first position	12 N	12 N
Release force first position	2 N	2 N
Operating force second position	-	35 N
Total travel first position	12°	12°
Total travel second position	-	22°
Flap guard rotate torque	>0.015 N.m	>0.015 N.m
Mechanical life	250,000 cycles	100,000 cycles
Electrical characteristics		
Voltage	28 VDC	28 VDC
Current (resistive)	5 A	5 A
Current max (inductive L/R=26ms)	3 A	3 A
Electrical endurance (full load)	50,000 cycles	50,000 cycles
Low level	10 mA @ 30 mV	10 mA @ 30 mV
General characteristics		
Case	black PA6.6	black PA6.6
Button	thermoplastic	thermoplastic
Terminal	solder, brass with gold	solder, brass with gold
Contact	silver with gold plate	silver with gold plate
Dielectric strength	50 V / 1min	50 V / 1min
Insulation resistance	> 100 Mohms @ 50V	> 100 Mohms @ 50V
Operating temperature	-40°C to 71°C	-40°C to 71°C
Storage temperature	-55°C to 85°C	-55°C to 85°C
Weight	-	-

MTS PART REFERENCE

MTS - X X X

Specific product possibility on request

N# position

- 1. single
- 2. two

Button color

- B. black
- R. red
- G. gray

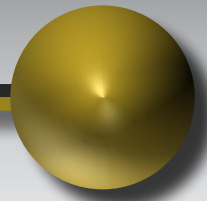
Flap guard *

- O. none
- B. black
- R. red

(*) for single-position trigger:
position operable when flap guard is lifted up

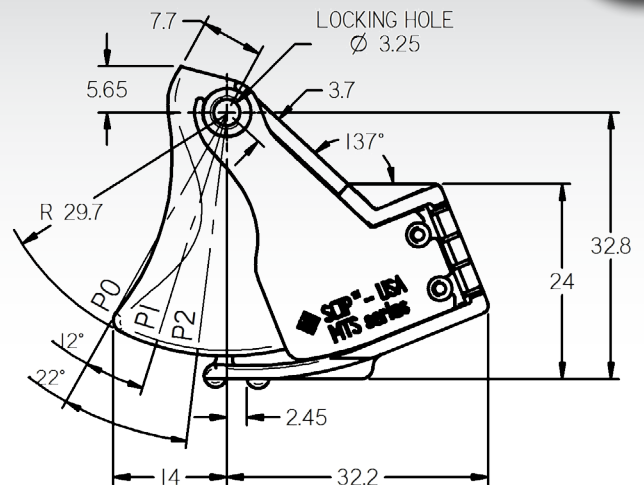
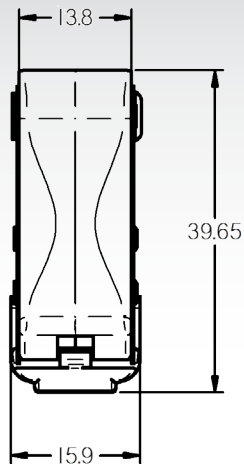
for two-position trigger:
position 1 operable with flap guard
position 1 & 2 operable when flap guard is lifted up



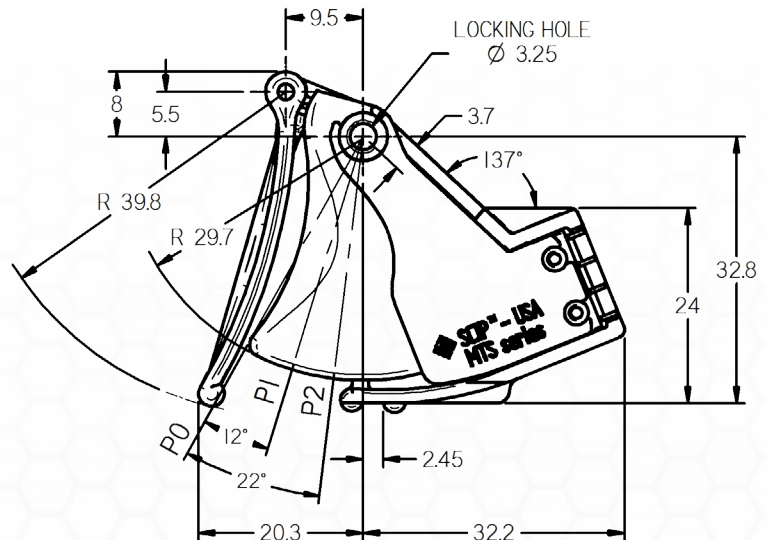
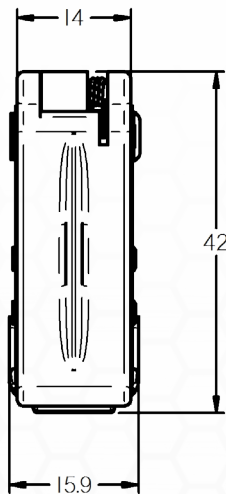


DIMENSIONS

MOM
MTS-xx0

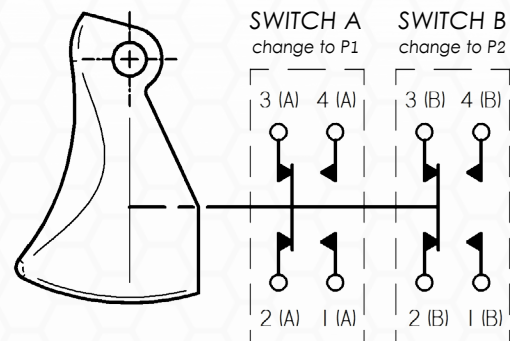
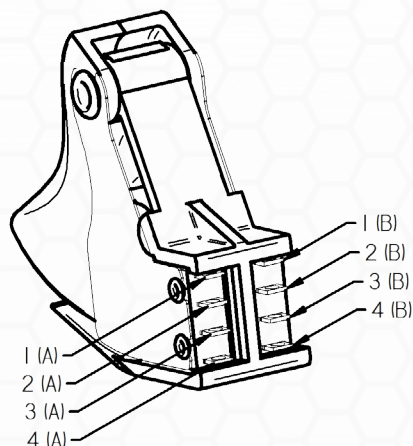


MOM +
FLAP GUARD
MTS-xxB
MTS-xxR



ELECTRICAL WIRING & DIAGRAM

Diagram representation
in rest position P0



- SINGLE-POSITION: contains only (A) switch
- TWO-POSITION: contains (A) & (B) switches